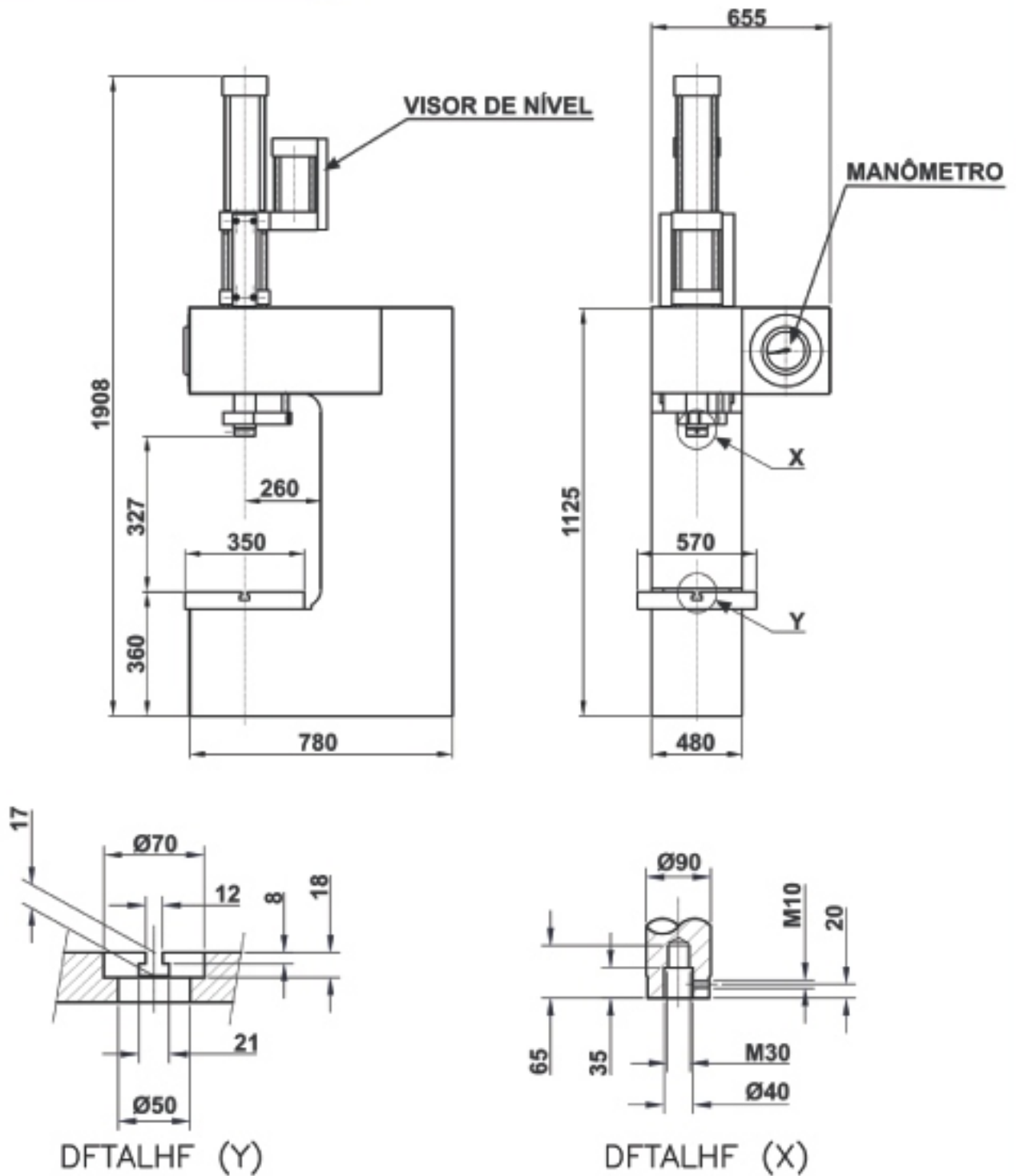
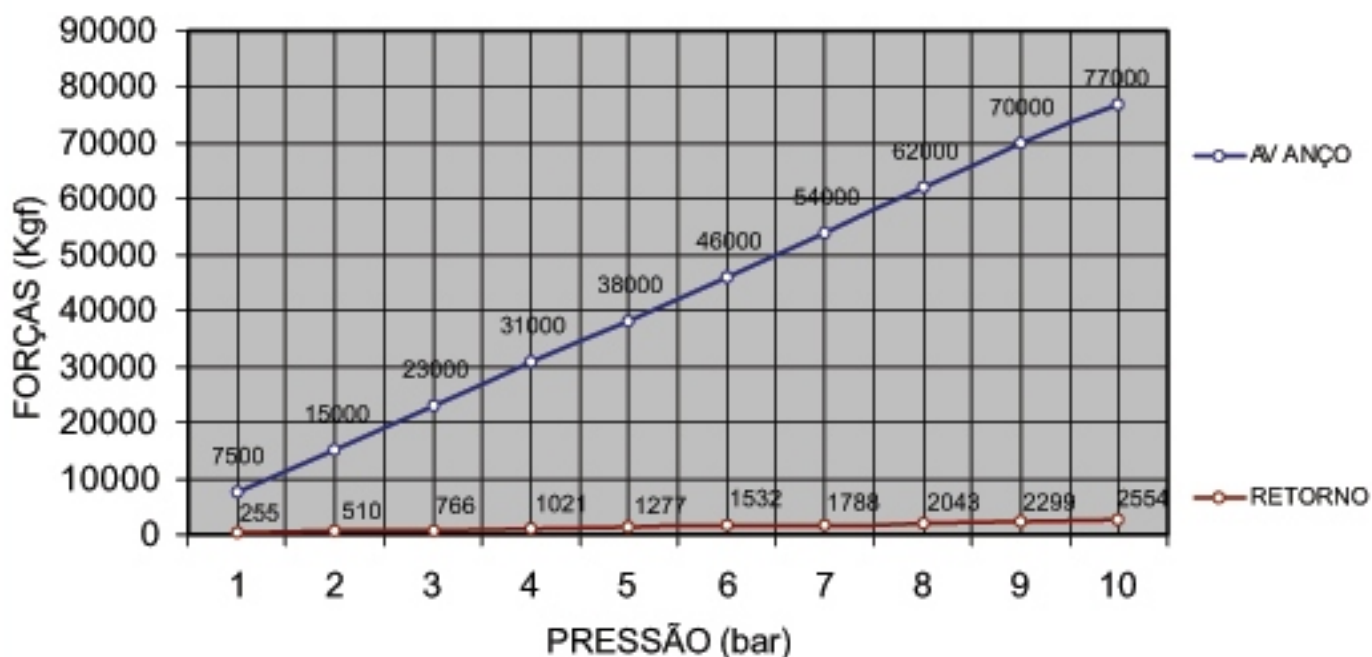




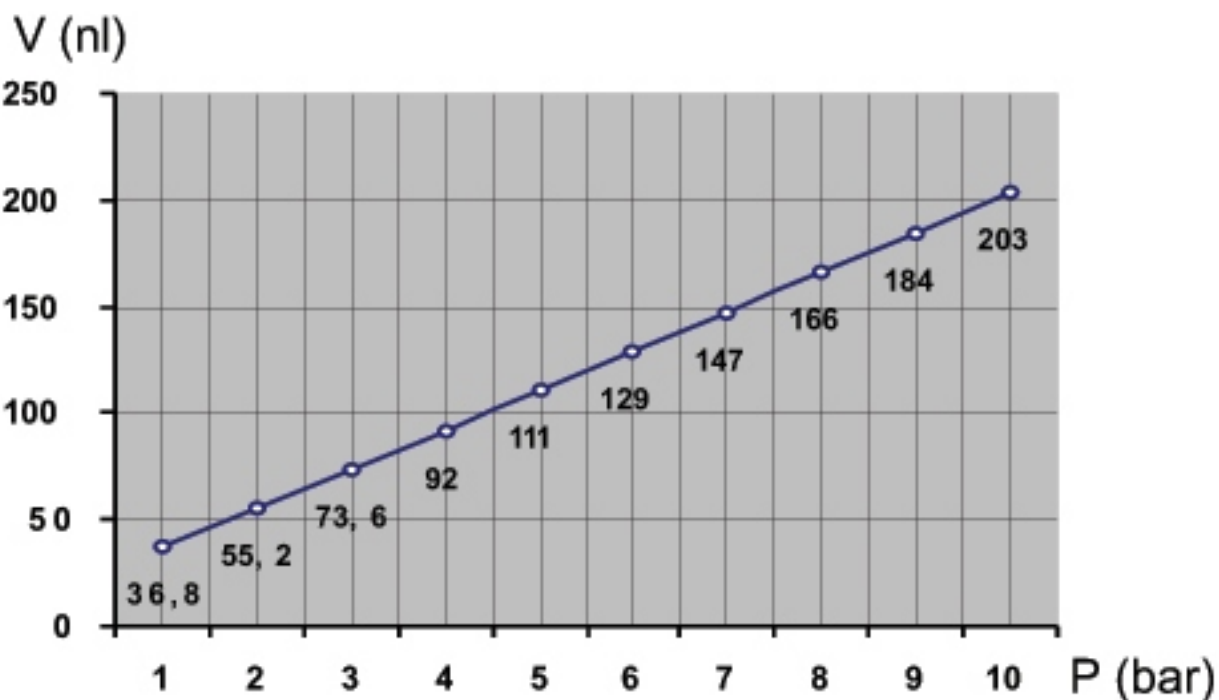
MODELO : PHP-200-60-10-45  
CURSO TOTAL = 60mm  
CURSO HIDRÁULICO = 10mm  
VÃO LIVRE DE 327mm



FORÇAS DE AVANÇO E RETORNO



CONSUMO DE AR



PARA AVANÇO + RETORNO  
CURSO 60mm  
1 pé³ = 28.3L