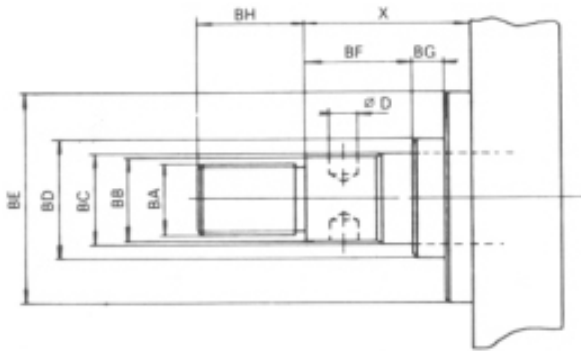


CILINDROS PNEUMÁTICOS C6

Ø5";Ø6";Ø8";Ø10";Ø12";Ø14";Ø16";Ø18"



φ CIL.	BA	BB	EIXO BC	BD	BE	BF	BG	BH	D	X
8" (203,2)	1 1/2" NF12	49	50,8	71,2	120	29	22	50	9,5	67
10" (254)	1 3/4" NF12	62,5	63,5	76	120	26,0	23,0	60,0	9,5	69,0
12" (304,8)	2 1/4" NF12	62,5	63,5	76,0	120	26,0	23,0	60,0	9,5	69,0

φ CIL.	5" (127,0)	6" (152,4)
φ EIXO	2" (50,8)	2" (50,8)
AC-Z	16,6	16,6
AD	103,0	118,0
AF	49,0	60,0
AH	70,0	85,0
AJ	9,5	9,5
BA	96,0	96,0
BH	49,0	49,0
CC	31,8	31,8
CF	51,0	51,0
CH	25,4	25,4
DA	5/8" - II	5/8" - II
EA	1/2" NPT	1/2" NPT
EB	158,0	184,0
FA	17,0	17,0
FD	218,0	244,0
FH	22,2	22,2
FO	27,0	27,0
H	50,0	50,0
LC	139,0	139,0
MH	50,8	50,8
MJ	31,8	31,8
O	49,0	49,0
P	49,0	49,0
R	18,0	18,0
S	60,3	60,3
SC	237,0	259,0
T	31,8	31,8
TA	180,0	206,0
TB	38,1	38,1
TH	40,0	40,0
TO	180,0	206,0
U	90,0	90,0
UA	246,0	272,0
UB	190,0	216,0
UC	220,0	286,0
UI	220,0	286,0
UJ	190,0	216,0
V	70,0	85,0
X	67,0	67,0
XC	255,0	286,0
XF	288,5	288,5
XH	206,0	206,0
XI	91,5	91,5
XL	181,5	181,5
XK	136,5	136,5
Z	91,5	91,5
ZC	224,0	224,0
ZH	276,0	291,0
ZJ	320,3	320,3
ZO	233,0	233,0
β	60°	60°

φ CIL.	8" (203,2)	10" (254,0)	12" (304,8)
φ EIXO	2" (50,8)	2 1/2" (63,5)	2 1/2" (63,5)
AC-Z	16,6	16,6	16,6
AD	149,0	183,0	201,0
AF	52,0	35,0	35,0
AH	80,0	70,0	70,0
AJ	9,5	9,5	9,5
BA	96,0	102,0	102,0
BH	54,0	60,0	65,0
CC	31,8	50,8	50,8
CF	51,0	63,5	63,5
CH	25,4	31,8	31,8
DA	5/8"-11	5/8"-11	5/8"-11
EA	3/4" NPT	3/4" NPT	3/4" NPT
EB	241,0	308,0	350,0
FA	17,0	17,0	17,0
FD	324,0	412,8	456,0
FH	22,2	28,6	28,6
FO	27,0	28,0	28,0
H	50,0	62,5	62,5
LC	149,0	170,0	182,0
MH	44,5	50,8	63,5
MJ	31,8	60,0	60,0
O	54,0	60,0	65,0
P	54,0	60,0	65,0
R	19,0	19,0	19,0
S	60,3	98,0	98,0
SC	253,0	240,0	252,0
T	31,8	60,0	60,0
TA	264,0	336,0	382,0
TB	50,8	50,8	50,8
TH	56,0	51,0	51,0
TO	264,0	336,0	382,0
U	95,0	110,0	117,0
UA	368,0	470,0	510,0
UB	274,0	346,0	392,0
UC	376,0	438,0	484,0
UI	376,0	438,0	484,0
UJ	274,0	346,0	392,0
V	128,5	163,0	163,0
X	56,0	67,0	69,0
XC	257,0	272,0	286,0
XF	287,5	363,6	377,6
XH	205,0	237,0	251,0
XI	83,0	97,0	101,5
XL	178,0	207,0	218,5
XK	130,5	152,0	160,5
Z	83,0	97,0	101,5
ZC	224,0	256,0	270,0
ZH	285,0	307,0	321,0
ZJ	319,3	423,6	437,6
ZO	232,0	265,0	279,0
β	60°	60°	60°