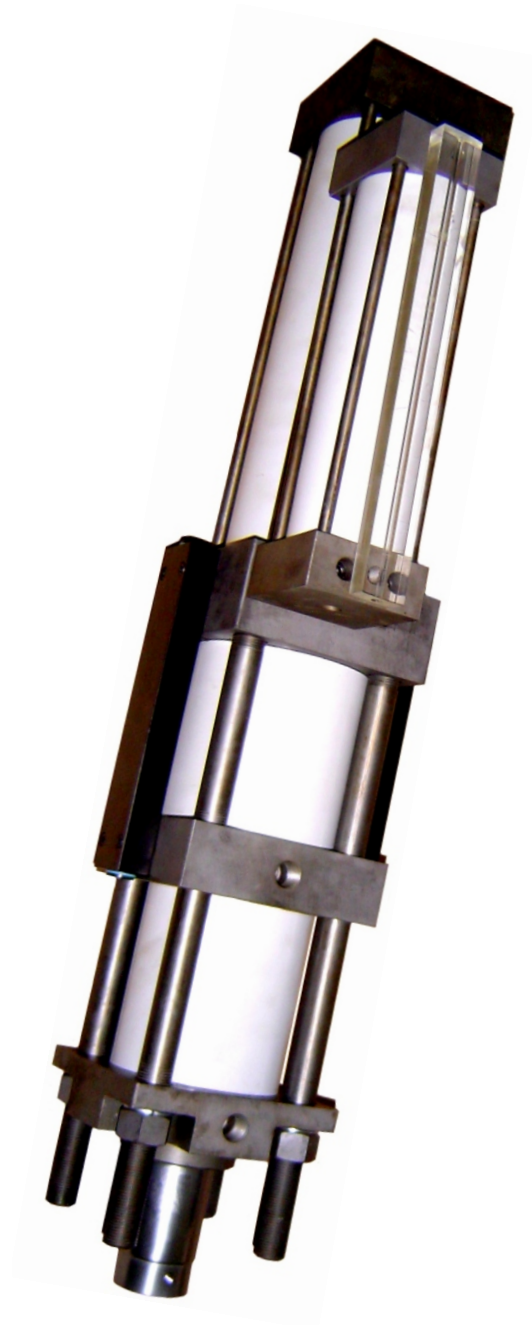
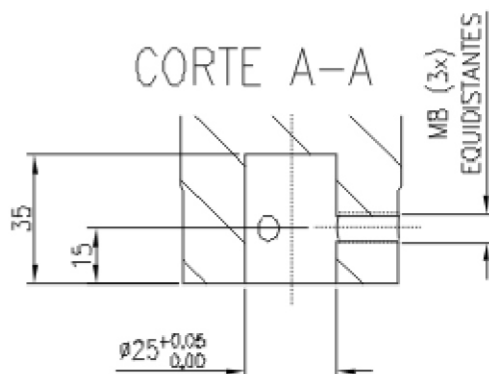
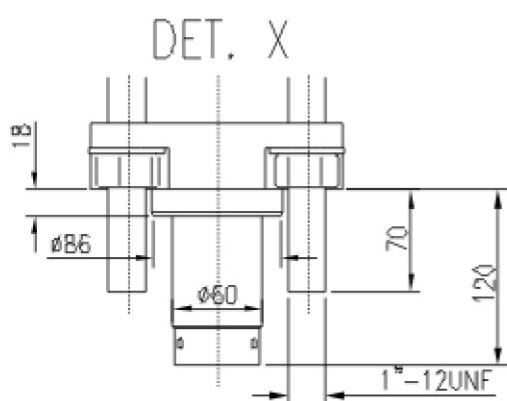
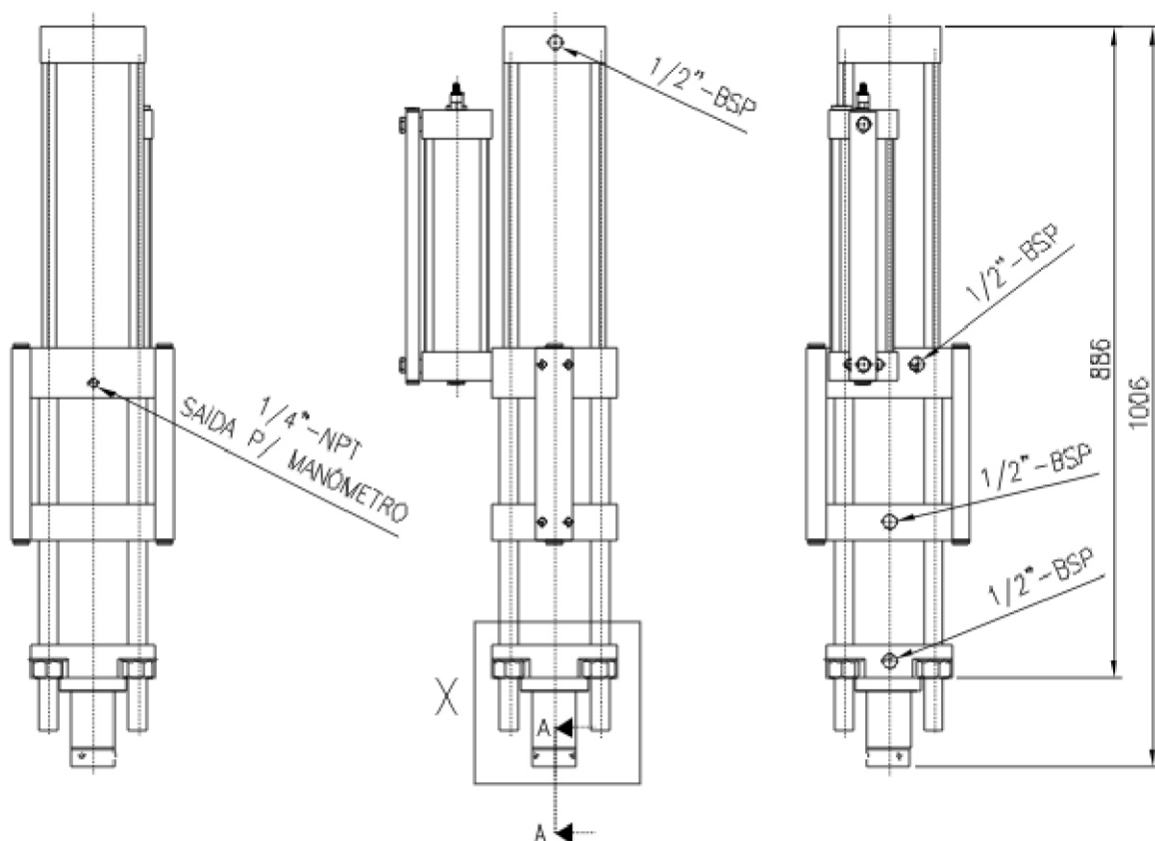
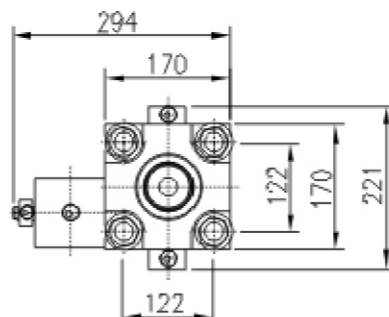


CILINDRO HIDROPNEUMÁTICO

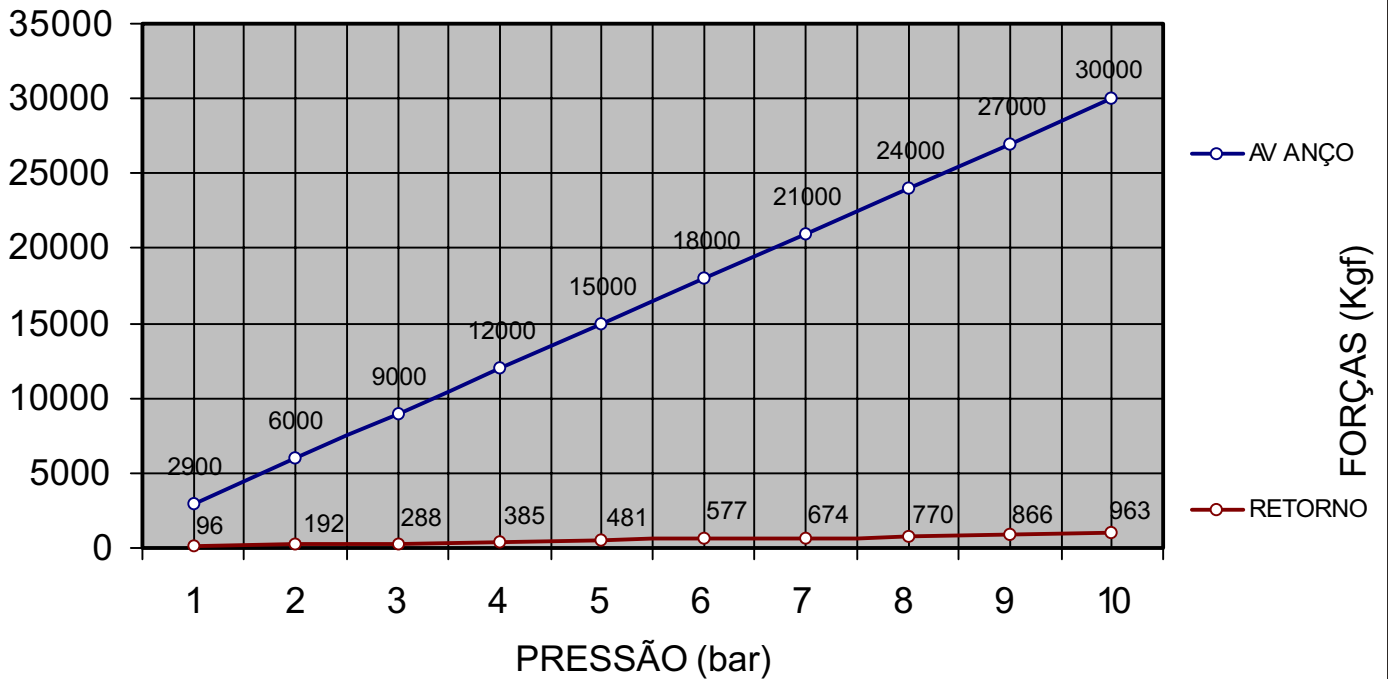


18000 KGF

MODELO : CHP-125-60-10-18
CURSO TOTAL = 60mm
CURSO HIDRÁULICO = 10mm

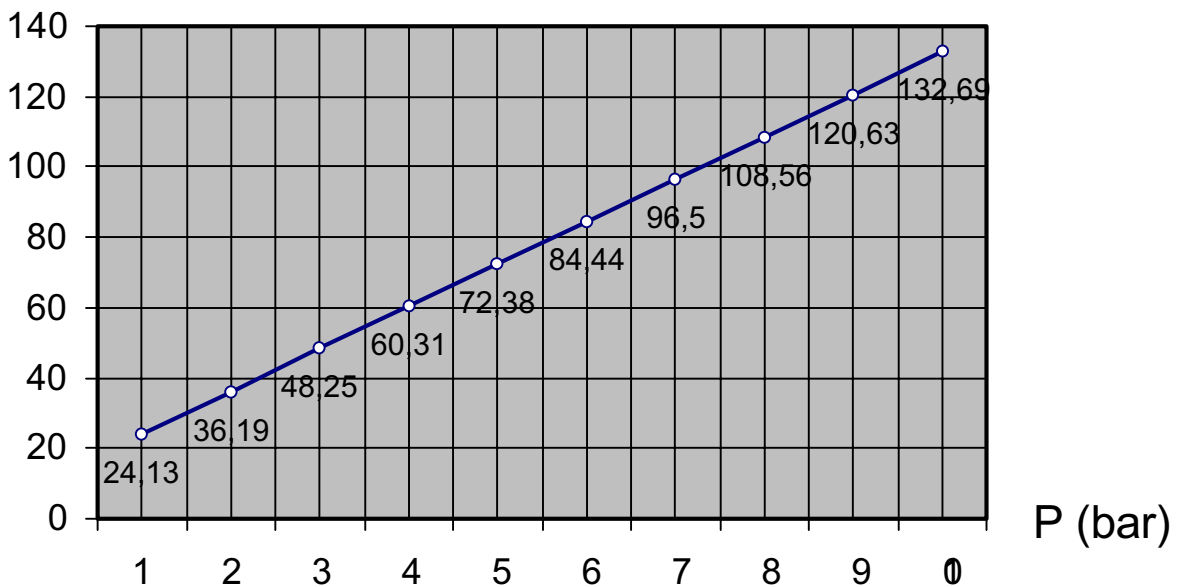


FORÇAS DE AVANÇO E RETORNO



V (nl)

CONSUMO DE AR



PARA AVANÇO + RETORNO
CURSO 100mm
1 pé³ = 28.3L